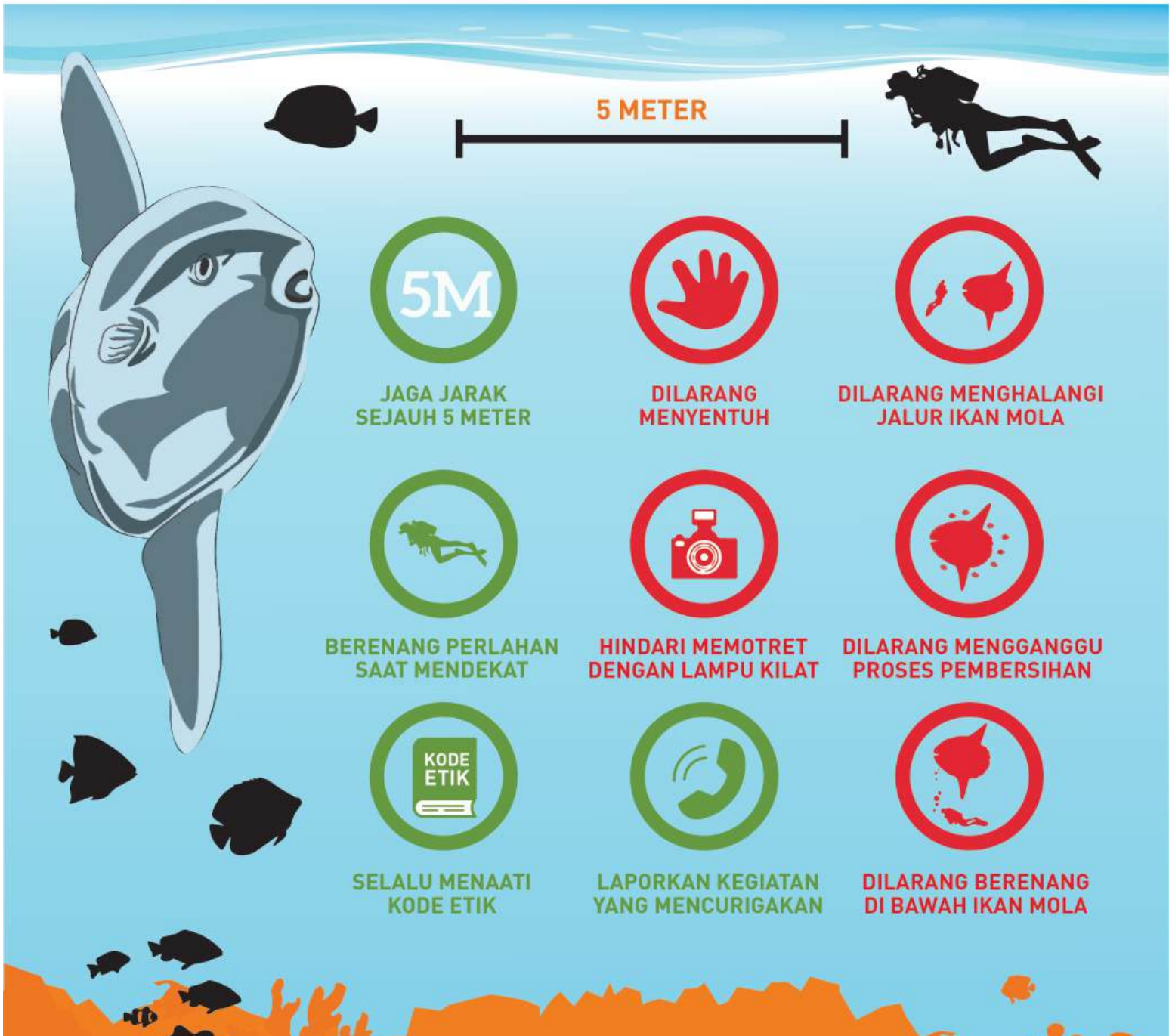




KODE ETIK INTERAKSI IKAN MOLA



JAGA JARAK
SEJAUH 5 METER



DILARANG
MENYENTUH



DILARANG MENGHALANGI
JALUR IKAN MOLA



BERENANG PERLAHAN
SAAT MENDEKAT



HINDARI MEMOTRET
DENGAN LAMPU KILAT



DILARANG MENGGANGGU
PROSES PEMBERSIHAN



SELALU MENAATI
KODE ETIK



LAPORKAN KEGIATAN
YANG MENCURIGAKAN



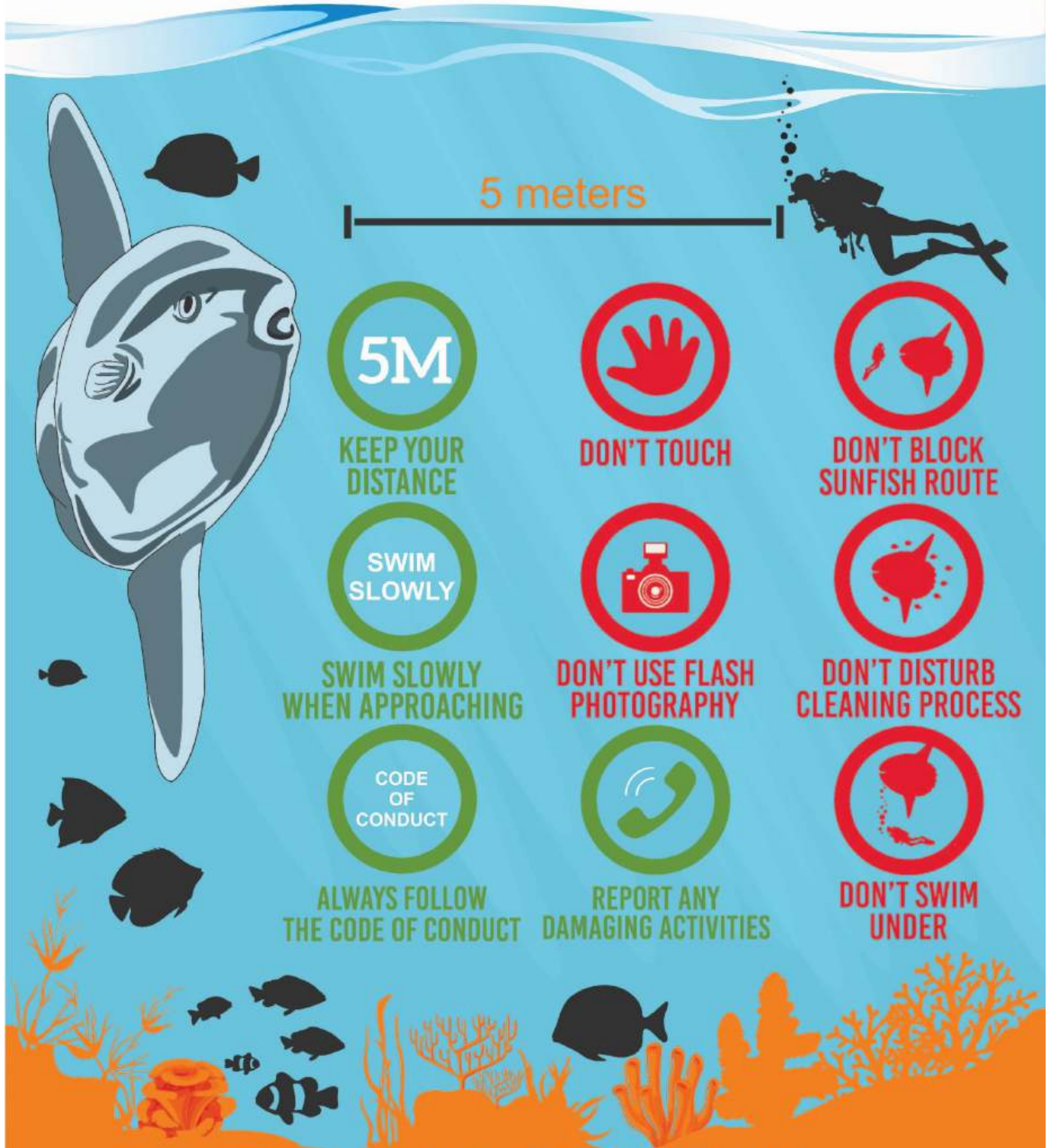
DILARANG BERENANG
DI BAWAH IKAN MOLA

KAWASAN KONSERVASI (KK) NUSA PENIDA

- ❑ Ketahui dan jelaskan kepada pengunjung tentang KK Nusa Penida
- ❑ Berpartisipasi dalam mendukung pengelolaan KK dan laporkan kegiatan yang mencurigakan ke unit pengelola KK Nusa Penida
- ❑ Menyelamlah bersama pihak yang mendukung dan mematuhi kode etik



Code of Conduct for SUNFISH INTERACTIONS



**KEEP YOUR
DISTANCE**



DON'T TOUCH



**DON'T BLOCK
SUNFISH ROUTE**



**SWIM SLOWLY
WHEN APPROACHING**



**DON'T USE FLASH
PHOTOGRAPHY**



**DON'T DISTURB
CLEANING PROCESS**



**ALWAYS FOLLOW
THE CODE OF CONDUCT**



**REPORT ANY
DAMAGING ACTIVITIES**



**DON'T SWIM
UNDER**

NUSA PENIDA MARINE PROTECTED AREA

- ◆ Know and tell guests about NUSA PENIDA MPA
- ◆ Participate in supporting the MPA and report any damaging activities to the MPA office
- ◆ Only dive with companies which have endorsed and adhere to the code of conduct

Department of Marine Affairs and Fisheries
Bali Provincial Government
dislautkan@baliprov.go.id
(0361) 223 562

Nusa Penida MPA Management Unit
Sampalan, Nusa Penida, Klungkung, Bali
uptdkpprovbalif@gmail.com
081 337 857 220