

Quarterly Report July – September 2011



Board of Trustees:

Mr. George S. Tahija
Prof. Dr. Hasjim Djalal
Ms. Yuli Ismartono
Mr. Made Subadia
Ms. Susantin Sinarno
Ms. Meinar Alison
Ms. Rili Djohani
Mr. Widodo Ramono
Dr. Abdul Ghofar
Mr. Gde Raka Wiadnya
Mr. Johannes Subijanto
Mr. Marthen Welly



Regional Board of Advisors:

Dr. Jamal Jompa, Coremap, Hasanuddin University, Indonesia

Dr. Tonny Wagey, Ministry of Marine Affairs & Fisheries, Indonesia, ATSEA

Prof. Dr. Nor Aieni Binti Haji Mokhtar, Ministry of Science, Technology and Innovation, Malaysia

Prof. Dr. Ridzwan Abdul Rahman, University Malaysia Sabah, Malaysia

Prof. Dr. Ed Gomez, University of the Philippines/ Marine Science Institute, Philippines

Dr. Mundita Lim, Department of Natural Resources and Environment, Philippines

Ms. Kay Kumaras Kalim, Department of Environment & Conservation, Papua New Guinea

Dr. Augustine Mungkaje, University of Papua New Guinea

Mrs. Agnetha Vave Karamui, Ministry of Environment and Meteorology/ Fisheries, Solomon Islands

Dr. Reuben John Sulu, University of South Pacific (USP), Solomon Islands

Mr. Lourenco Borges Fontes, Ministry of Fisheries, Timor Leste

Our Vision:

To ensure the livelihoods of millions of people, today and in the future, the rich marine resources and coastal ecosystems of the Coral Triangle will be effectively cared for.

Our Mission:

To effectively care for our rich marine heritage for the benefit of the people, the Coral Triangle Center will inspire the commitment and share the knowledge and skills needed by leaders and communities.

Our Values:

- **Excellence:** We will collaborate with stakeholders to adapt the best available information on coastal ecosystems to the reality of the local communities and cultures, to inspire passion and build world-class competence in marine conservation and sustainable management.
- **Locally-based:** We are committed to learning from the knowledge and traditional practices of coastal peoples so that our communications, training courses, and programs reflect local pride and ownership in our heritage, culture, adaptability, and long-term future.
- **Catalytic:** We will stimulate partnerships with leaders in sectors such as tourism, fisheries, agriculture, and business development, recognizing that holistic and inclusive approaches are necessary for the sustainability of coastal ecoregions and the health and economy of local communities.
- **Trust-worthy:** To best serve the communities and nations of the Coral Triangle, we will provide trusted information, be transparent in our actions, and hold ourselves accountable for the high-quality of our programs.
- **Results-oriented:** We will measure our success, adapt strategies as needed, and be proactive and responsive to changing circumstances, documenting our impact over time.

Contact Details:

Rizki Novianti, Jl. Danau Tamblingan No. 78, Sanur, Bali, Indonesia, rnovianti@coraltrianglecenter.org

Cover:

Reef Health Monitoring Training, Nusa Penida 2011
© Marthen Welly/CTC

Suggested Citation:

Coral Triangle Center (2011), Quarterly Report
July – September 2011.

© 2011, Coral Triangle Center

All Rights Reserved.

Reproduction for any purpose is prohibited without prior permission.

Contents

Executive Summary.....	5
Introduction	6
1. Regional Hub	6
1.1 Second CTC Board Meeting, July 30 2011, CTC office.....	6
1.2 CTC Launch, July 30 2011, CTC office.....	6
1.3 Photos by Robert Delfs	7
1.4 Development of CTC Board.....	7
1.5 Business Approach	7
1.6 Visits.....	8
2. Training and Learning.....	9
2.1 Site-based Trainings.....	9
2.2 Training of Trainers	10
2.3 School for MPA Management.....	10
2.4 CTI related activities.....	10
2.5 Meetings and Consultations	11
3. Learning Sites	11
3.1 Learning Site Nusa Penida MPA.....	11
3.2 Learning Networks and Leverage.....	13
4. Learning Networks	13
4.1 Publication: “Overview Existing (Learning) Networks in the CT and Beyond”	13
4.2 MPA Learning Network: communications and target groups	13
4.3 Online WorkSpace MPA Learning Network	14
4.4 Integration of CTI-related web portals	14
4.5 TNC’s Technology Learning Center	14
5. Public & Private Partnerships.....	15
5.1 Brawijaya University	15
5.2 Partnership with TNC and CTI Alliance	15
5.3 Roundtable discussion US State Department Undersecretary	15

List of Acronyms

ADB	Asian Development Bank
ATSEA	Arafura and Timor Seas Ecosystem Action
ATSEF	Arafura and Timor Seas Expert Forum
BPSDMKP	Center for Capacity Development to the Ministry of Marine Affairs and Fisheries
COREMAP	Coral Reef Rehabilitation and Management Program
CTC	Coral Triangle Center
CTMPAS	Coral Triangle MPA System
CTI	Coral Triangle Initiative
- NCC	National Coordination Committee
- NPOA	National Plan of Action
- RPOA	Regional Plan of Action
- SOM	Senior Officials Meeting
CTSP	Coral Triangle Support Program
LIPI	Lembaga Ilmu Pengetahuan Indonesia / Science Institute Indonesia
MMAF	Ministry of Marine Affairs and Fisheries
SMPAM	School for MPA Management
TNC	The Nature Conservancy
UNDP	United Nations Development Program
USAID	United States Assistance in Development
WWF	World Wildlife Fund
SCTR	State of the Coral Triangle
FGD	Focus Group Discussion
IPB	Bogor Institute on Agriculture
UNDIP	Diponegoro University
UNBRAW	Brawijaya University
UNHAS	Hasanuddin University
USCTI-PI	USAID Support to the Coral Triangle Initiative – Program Integrator
NGO	Non-Governmental Organization
CBO	Community Based Organization

Executive Summary

CTC is now officially launched with its office set up in Sanur, Bali, 11 staff, a fiduciary board (12 members) and regional advisory board (12 members). Critical to CTC's success will be its focus, niche and capacity to deliver excellent services in marine conservation and capacity development. The 2nd board meeting focused on governance of the foundation, the operational systems, partnerships and CTC's growth scenario's. A business planning process has been set in motion for each of the 5 CTC strategies that will be integrated in one business plan facilitated by business advisors.

Specific partnerships are formalized with the Ministry of Marine Affairs and Fisheries (MMAF) Indonesia, Brawijaya and Hasanuddin University and collaboration with the interim regional CTI Secretariat, NCC Indonesia, The Nature Conservancy, CTI Alliance, RARE, CTSP/MPAG (WWF-TNC-CI-consortium), Klungkung Local Government, Bali network of local NGOs. CTC funding sources are from Give2Asia, USAID, ADB, TNC, and UNDP.

Four trainings of one week have been conducted in this period, 2 site-based training in Nusa Penida and Berau for facilitators of various institutions, one training for students at the Brawijaya University and one in-house staff training. CTC office in combination with Nusa Penida has been proven an excellent combination for training and demonstration site for MPA planning and management. The Nusa Penida successfully hosted a US government delegation with Under-Secretary of State Maria Otero among others. After a comprehensive public consultation process with all the communities in Nusa Penida facilitated by CTC, a draft zoning plan has been designed based on ecological and socio-economic data collected by TNC /CTC over the years. A new practical training module has been developed on public consultation techniques in support of the planning and management of MPA.

The regional MPA Learning Network developed by CTC will soon be operationalized with specific services for its members in the Coral Triangle region. And will ensure alignment with existing learning networks at the national and regional level. Training on-line, library services , small grant programs will be among the services for the regional MPA learning network. CTC's web-site is now fully operational and will host the regional MPA Learning network directory of services will have a direct link from the CTI secretariat's home-page. In collaboration with TNCs technology center in the US, CTC will put the marine protected area management effectiveness protocol on-line in a modular fashion in the next 12 months.

Introduction

Since the last quarterly update (March-May 2011) much progress has been achieved in all five strategies. Starting from the launch of CTC on July 30, to the development of the zoning system in Nusa Penida, the implementation of site-based and CTC-based trainings to the development of a business approach for CTC's envisioned Regional Hub. These, and many more updates and milestones are recorded in more detail in this progress report laying the foundation for CTCs capacity development programs and institutional growth.

1. Regional Hub

1.1 Second CTC Board Meeting, July 30 2011, CTC office

Focus of the meeting was on the governance of CTC and to review the finance and HR systems, financial reports, staffing projections, funding situation as well as CTC's institutional development and organizational growth. Finance and HR manuals were approved as well as the financial reports. CTC will conduct quarterly board meetings and



program/financial reports besides monthly updates and cash flow. The board agreed to carefully plan growth and focus on relatively small successful programs such as Nusa Penida that can be replicated to other areas such as the Banda Islands that will be the next MPA learning site for CTC in Indonesia. Specific strategies will be developed regarding a CTC endowment and a business plan for CTC's facilities will be completed by December 2011. Next board meeting is planned in October in Jakarta with the opportunity to have a dinner with the CTC regional advisory board members who participate in the CTI Senior Officials Meeting (SOM) and a board retreat in Nusa Penida on 7-8 December 2011. A communications strategy will be developed that will include position papers ("marine nation") across the Coral Triangle from the board members and development of social media.

1.2 CTC Launch, July 30 2011, CTC office

The launch was attended by 83 partners and friends, including representatives of central and local government, universities, international and local NGOs, dive and tourism operations, community groups and media. After the opening speech by the Executive Director and the introduction of the CTC Board and Staff members, the following invited speakers gave their speeches: Mr. George Tahija, Chair CTC, Mr. Suseno Sukoyono, Vice Chair CTI Regional Secretariat from the Ministry of Marine Affairs and Fisheries, and Mr. Suar Bawa, Founder Community Conservation Center Nusa Lembongan.



1.3 Photos by Robert Delfs

Robert Delfs, an underwater photographer based in Sanur, Bali agreed to make his underwater photos available for CTC as well as photos taken of coastal communities in Indonesia (Bali, Wakatobi, Komodo, Banda, and Raja Ampat). An agreement has been signed and Robert's photos have already been used to decorate CTC's office, to illustrate CTC's publications, and to give as a token.



Mr. Tahija offers a Delfs picture to Mr. Suseno as a token of partnership

1.4 Development of CTC Board

Three new members joined the CTC Regional Advisory Board:

Ms. Kay Kalim, from the Department of Environment and Conservation in Papua New Guinea
Ms. Mundita Lim, from the Department of Environment and Natural Resources in the Philippines
Ms. Agnetha Vave-Karamui, Ministry of Environment and Meteorology/Fisheries

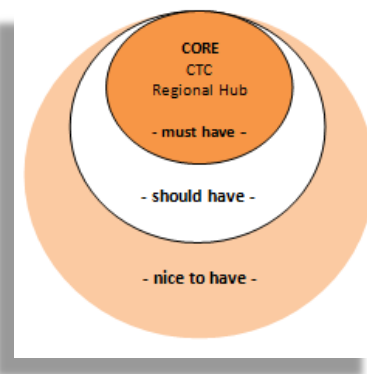
The CTC regional board will be requested to support and advice CTC regarding enhancing local capacity in the CT region and maximizing sharing and learning across the CT6 countries is very much appreciated.

1.5 Business Approach

In the development of CTC's Regional Hub a business approach is needed to align the ambition with the actual state of the organization, focus managerial attention towards the regional hub separated from the core business of CTC, and to manage associated risks more easily.

All CTC staff has been asked to think about and answer the following questions:

1. **Targets:** Minimum, Moderate, Maximum
For instance: How many training workshops a year? How many days per year training on site or at CTC?
2. **Target group**
Who is the target group involved? How many participants in one training/ are trained per year?
3. **Estimated traffic**
Quantify the amount of activities per year and people involved per activity in those activities at CTC.
4. **What functions** are needed to full fill the program of this strategy for the hub (e.g.: what training facilities are needed, how often)?
5. **Quantify** how much money can be billed on this activity to match the operating costs of CTC?



Priorities for the CTC Regional Hub

This process has been facilitated by Scief Houben, CTC's business advisor, in preparation of the CTC Business Planning Workshop in October 2011.

1.6 Visits

- CTC received various donor visits from the Margaret A. Cargill Foundation facilitated by WWF and the Packard Foundation. New funding opportunities and partnerships have been discussed regarding capacity development and learning sites such as the Banda Islands.
- One day meeting with Amin Pakzad from Tetrattech / US CTI Support Program. Financial reports PI Small Grant completed and approved for March-June 2011.
- Visit Professor Ed Gomez, Founder Marine Science Institute of the University of the Philippines and CTC regional advisory board member, who provided further guidance on strategic directions for CTC and brought books for CTC's library. He suggested a CTC regional advisory board meeting in Jakarta back to back with the SOM 7 meeting, planned this October in Jakarta.
- Visit Dr. Tonny Wagey, Regional Project Manager Arafura and Timor Seas Ecosystem Action (ATSEA) and CTC regional advisory board member, who suggested a capacity development role for CTC in ATSEF (Arafura and Timor Seas Expert Forum) starting in 2012.
- Visit Dian Estey, Coral Triangle Communications Platform, to seek input regarding the launch of this new Platform. Rili Djohani is an advisory board member to this Platform.
- Visit Helen Fox, Senior Marine Scientist WWF, who informed CTC about the ICRS in Cairns 2012.

2. Training and Learning

2.1 Site-based Trainings

CTC training and learning program was strengthened with Denny Boy Mochran, CTC Training Specialist. He brings a wealth of experience in training and facilitation on environmental issues.

Boy has been a professional training facilitator since 1990. He has conducted more than 80 training sessions and engaged as a consultant on leadership, community organizing, participatory monitoring & evaluation skills. He specialized in non-profit organization management with the Institute For Public Private Partnership in Washington DC, and on trainings on integrated coastal zone management through the Broad-based Coastal Management Training Program (BCMTP) in the Philippines. Furthermore, he is also member of the Telapak Society.



The following training sessions have been conducted by CTC's Training and Learning Team.

Date	Title	Trainers	Location	Participants, Number and type	
22-24/7	Systematic MPA Design	Gede Raka Wiadnya (CTC Board) and Arief Darmawan (CTC staff)	Brawijaya University, Malang	23 students	Certificate jointly issued by Unbraw and CTC
12-15/8	MPA Management Principles and Effectiveness	CTC Training Team	CTC Office	17 stakeholders for Bali MPAs involved in Bali Marine Conservation Community	certificate jointly issued by BPSDMKP-MMAF and CTC
20-23 /8	MPA Management Principles	CTC Training Team, local organizer and TNC Berau Field Office	Tanjung Redeb, Berau	Berau MPA Facilitators, 26 participants from communities of sub-districts and villages within and surrounding Berau MPA.	certificate jointly issued by BPSDMKP-MMAF and CTC
5-16/10	Reef Health Monitoring	CTC Training & Learning Sites Teams, Co-facilitated by Experts Brawijaya University, Reefcheck Indonesia and TNC IMP	CTC Office and Nusa Penida	20 representatives from various institutions	aimed to enhance the technical capacity on MPA resources monitoring and to share experiences as well as to strengthen network, particularly among MPA professional stakeholders. Two journalists from Metro TV joined the training to cover the session.



A UNBRAW participant practising GIS on a map of Nusa Penida



Arief Darmawan conducting GIS Training at UNBRAW

2.2 Training of Trainers

2.2.1 Proposal DSEWPaC “training of trainers” approved

This two-year project “Strengthening in-country tropical marine resources management training capacity in Papua New Guinea (PNG) and the Solomon Islands (SI)”, in partnership with TNC and the CTI Alliance is approved and will commence soon.

Four major outcomes are expected: Scoping study, 2) Development of Training Curricula, 3) Trial training, 4) Implementation of Training for Trainers. Local training specialists based in PNG and Solomon Islands will be recruited with CTSP funding year 3. CTC’s executive director joined coordination meetings between TNC, CTI Alliance, the Australian Department of Sustainability, Environment, Water, Population and Communities (DSEWPaC) with Papua New Guinea government, and stakeholders in Port Moresby in the week of September 30, 2011.

2.2.2 A preparatory meeting with RARE was held at CTC to finalize the upcoming training plan for RARE staff (scheduled 21 and 26 September 2011).

2.2.3 Presentation on cooperation between Fisheries and MPAs, 20 September 2011, CTSP RPO meeting between UCSB, RARE, CTSP RPO, WWF, CI, TNC and other partners.

2.2.4 Participating and giving presentation at the Workshop on Strategic Planning for Capacity Building organized by BPSDMKP (Golden Boutique Hotel – Jakarta, 23 September 2011).

2.3 School for MPA Management

CTC – UNDP – BPSDMKP Meeting on SMPAM

A consensus to reconfirm and expedite the commitment for cooperation among the Center for Capacity Development in Marine affairs and Fisheries (BPSDMKP), CTC and UNDP in the establishment of SMPAM was reached at this meeting conducted at BPSDMKP Office of Ministry of Marine Affairs and Fisheries. Attending at the meeting Sjarief Widjaja (DG for BPSDMKP), Rili Djohani and Johannes Subijanto of CTC, Iwan Kurniawan of UNDP, and key staff at MMAF.

UNDP Contract to develop Global Environment Facility (GEF) Project Proposal

UNDP grants a contract to develop Project Identification Form and Project Preparatory Grant for a GEF Project on Strengthening the Marine Protected Area System (MPAS). The proposed project includes the capacity strengthening for MPA Management, particularly through training, establishment of a School for MPA Management (SMPAM) and learning sites.

2.4 CTI related activities

2.4.1 CTI National Coordination Committees (NCC) Meeting on Working Groups Reports

The 3rd Regular NCC Meeting to CTI NCC working groups to update on the proceedings and to prepare the upcoming CTI SOM 7.

2.4.2 Roadmap for State of Coral Triangle Report (SCTR), 10 August 2011

During this meeting a consensus between CTI NCC Indonesia and ADB Project on Knowledge Management is reached, specifically on the process and roadmap toward the development of SCTR for Indonesia. Attending were Narmoko Prasmadji (CTI NCC Indonesia), Suharsono (LIPI), Imran Amin (TNC), J Subijanto (CTC) and NCC key staff. CTC is the key supporting focal point under its assignment as Knowledge Integrator (within ADB Project Framework) for the SCTR process and the list of potential contributors and team of writers. A series of workshops was agreed to be co-facilitated by NCC and ADB Project. Attending were Narmoko Prasmadji (CTI NCC), Suharsono (LIPI), Imran Amin (TNC), J. Subijanto

(CTC) and NCC key staff. A series of consultative meeting sessions were jointly organized by NCC and CTC for the development of State of Coral Triangle Report at LIPI and NCC Secretariat Jakarta on 19 – 22 September 2011. A roadmap towards finalization of SCTR was adopted, including the establishment of a team of writers and contributors based on the report outline developed by ADB-RETA Project.

2.4.3 Meeting with CTI Regional Secretariat, MMAF, 15 September 2011

To update the learning network establishment and its alignment with the CTI SOM preparation.

2.5 Meetings and Consultations

2.5.1 National Committee for Marine Conservation (Komnaskolaut), 9 August 2011, Bogor

Attending MMAF KP3K Directors and representatives from partnering agencies and NGOs (in which CTC is recognized as the committee member). A consensus reached to renew the structure, scope of assignments and membership of the committee to adjust with the current circumstances and policies. A ministerial decree will be drafted to issue the renewal of the committee.

2.5.2 Meeting with USAID and CTSP RPO, 14 September 2011, USAID Office and RPO

To update the progress of CTSP activities implementation and prospects.

2.5.3 Training on Climate Change, WWF Indonesia, Athlete Century Hotel – Jakarta, 26-27/9/2011.

3. Learning Sites

3.1 Learning Site Nusa Penida MPA

3.1.1 Nusa Penida MPA Zoning system Design

CTC facilitated the development of the zoning system for Nusa Penida MPA. The first draft of Nusa Penida MPA zoning system includes 5 zones: 1. Core Zone, 2. Sustainable Fisheries Zone, 3. Marine Tourism Zone, 4. Seaweed farming Zone, 5. Holy Zone for temple. This draft is based on an ecologic and socio-economic survey and monitoring as well as consultations with experts. It is also in accordance with up to date laws and regulations such as Ministerial Decree of MMAF No. 2/2009 about *Procedure on MPA Development* and No.30/2010 about Management Plan and Zoning System of MPA.

Public Consultations and Consensus Building

CTC has been facilitating a series of public consultations with key stakeholders in Nusa Penida to get inputs and agreement on MPA Zoning System. After 26 meetings at sub-district level, villages and Focus Group Discussions (FGD) with fishermen, seaweed farmers, traditional and formal leaders, and marine tour operators, there were no rejections towards the draft of the zoning system. These key stakeholders gave constructive inputs for revising the draft of the zoning system. In the plan (August 2011), the final document of Nusa Penida MPA is available and agreed by Nusa Penida key stakeholders with its regulations for each zone. The last consultation was conducted at Klungkung District level in first week



of September, with villagers and dive operators in Nusa Lembongan to get inputs and agreement on the draft of zoning system. In general, villagers and dive operators support the draft of zoning system plan.

Management Body

In its capacity as a Nusa Penida MPA Task-Force member, CTC facilitated a meeting with Task-Force members to develop the structure of the Nusa Penida MPA Management Body. As a result, the first draft of the structure for a management body has been agreed upon and now needs to be communicated with key stakeholders in Nusa Penida to get input and reach consensus.

Reef Health Monitoring 2011

The CTC team facilitated a survey for partners and students to conduct reef and fish monitoring in Nusa Penida. The activity was done back to back with a training on reef health monitoring at the CTC office in Sanur. CTC partners such as TNC-IMP and Reef Check Indonesia were co-facilitators during the training. Five students from IPB, UGM, UNDIP, Brawijaya and Hasanuddin University were trained in collection of reef and fish data in Nusa Penida from 8 – 13 September 2011. This reef and fish monitoring training was also covered by media partner Metro-TV – Expedition.



Instructions and simulations on Reef Health Monitoring - © Marthen Welly/CTC

3.1.2 Nusa Penida's Fisheries Profile Development

CTC's volunteers from Sekolah Tinggi Perikanan (STP) Jakarta conducted a survey to develop a fisheries profile of Nusa Penida. The two students (Dinda and Wahyu) supervised by CTC Nusa Penida team, conducted their survey in Nusa Penida for three months collecting information related to type of fishing gear, fishing ground of Nusa Penida fishermen, market and price of fish. This profile is part of the socio-economic survey to develop the zoning system and management plan of Nusa Penida MPA.

3.1.3 Profile Development for Marine Tourism in Nusa Penida

CTC in collaboration with Brawijaya University, already developed a Profile of Marine Tourism for Nusa Penida. Three students from Brawijaya University conducted the survey under CTC's Nusa Penida team supervision. The Profile of Nusa Penida Marine Tourism is available in PDF format.

3.1.4 Survey for Willingness-To-Pay



In September, Casandra (Casey) Tania, volunteered at CTC. She graduated from Bogor Agriculture Institute with research experience in marine biology in Indonesia, Netherlands, and Japan, and in conducting a survey on 'Willingness to Pay' in Nusa Penida. The results of this survey were presented at the CTC office and serve as input on the development of a sustainable financing mechanism for Nusa Penida as a Marine Protected Area.

3.1.5 Underwater Film of Nusa Penida.

CTC in collaboration with Klungkung District Government developed a 30 minutes movie for Nusa Penida, specifically about the underwater life of Nusa Penida. The District government provided the budget and CTC developed the Film. Two master copies and 100 VCD's Film have been delivery to Klungkung District Government by CTC.

3.2 Learning Networks and Leverage

3.2.1 CTI Partners meeting, 26-27 September 2011, Kendari

The CTC MPA Learning Site Manager attended the CTI Partners meeting in Kendari to discuss and provide input to the National Plan of Action (NPOA)-CTI. A total of 22 participants from NGOs and CBOs throughout Indonesia attended the meeting and the participants also agreed to develop a learning and communication network that will become a formal partner of NCC Indonesia.

3.2.2 2nd Coral Reef Symposium.

The CTC MPA Learning Site Manager presented the Nusa Penida MPA program at the 2nd Coral Reef Symposium in Kendari. More than 100 presenters from Asia-Pacific included Australia and USA were sharing papers and presentation during the event. CTC's info sheets were widely distributed during the event and CTC was mentioned as key partner by BPSDM-MMAF on marine conservation capacity building in Indonesia.

4. Learning Networks

4.1 Publication: "Overview Existing (Learning) Networks in the CT and Beyond"

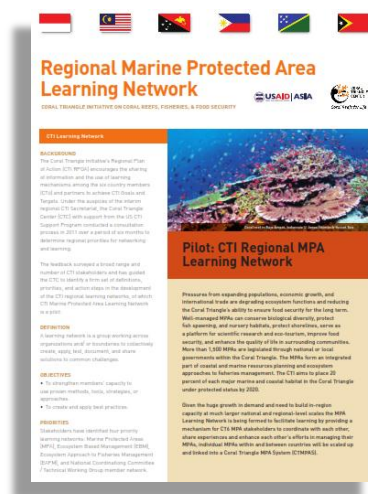
This publication provides an overview of existing networks in the Coral Triangle, Asia, the Pacific, and globally regarding coastal and marine resources conservation. 31 networks have been identified and described that are related to marine conservation in and around the Coral Triangle region. With this information, the CTI regional learning networks can be aligned and connected with other relevant networks in the region. Three existing networks can be recognized that have the biggest overlap with the CTI Learning Network, in terms of learning and sharing activities and geography: Locally Managed Marine Areas (LMMA) Network covering Asia-Pacific, Coral Reefs Rehabilitation and Management Program (COREMAP) in Indonesia, MPA Support Network (MSN).

4.2 MPA Learning Network: communications and target groups

To communicate the objectives and process of the MPA Learning Network an information sheet has been developed.

"Given the huge growth in demand and need to build in-region capacity at much larger national and regional-level scales the MPA Learning Network is being formed to facilitate learning by providing a mechanism for CT6 MPA stakeholders to coordinate with each other, share experiences and enhance each other's efforts in managing their MPAs, individual MPAs within and between countries will be scaled up and linked into a Coral Triangle MPA System (CTMPAS)."

This info sheet has been distributed to potential members of the network and CTI stakeholders.



4.3 Online WorkSpace MPA Learning Network

An output of the CTI Learning Networks in general and the MPA Learning Network in particular is to build a platform for envisioned members of the learning network to share lessons learned and collect best practices. In July, 2011 the management group of the MPA RLN agreed on a strategy to differentiate the approach to MPA Constituencies with different levels of involvement. This platform can become a tool for the MPA Community of Practice in the Coral Triangle. Incremental growth of the members is suggested for the CTI MPA Learning Network (see figure). The first step is to form a Core group of MPA managers and resource persons with a group of individuals from the CT6 governments, local and international ngo's and universities. These individuals are invited on the basis of their commitment and ability to support MPA's in the CT-region. Their role would be to communicate the MPA Learning Network activities and engage members in their respective countries. The individuals are connected on-line in a WorkSpace dedicated to this MPA Learning Network. At the WorkSpace they can discuss on certain topics, find reference materials, and are updated about milestones related to the MPA Learning Network.



Figure: Illustration of incremental growth of MPA LN constituencies

4.4 Integration of CTI-related web portals

Related to the WorkSpace for CTI MPA Learning Network, and CTC's aspirations to develop a highly interactive CTC website that provides on-line training modules, there are other websites and portals serving the Coral Triangle Initiative: ADB with the Learning Resources Network, the CT Atlas providing maps related to marine resources, the CTI Portal managed by US-CTI PI, and the home page of the CTI Secretariat. An additional website is developed by WWF that will serve as a CT communications platforms that will help promote the Coral Triangle as a destination. The owners of these websites and portals have agreed to link and integrate these initiatives to an updated website of the Regional CTI Secretariat. The result of this on-line integration would be presented at the next Senior Officials Meeting and Ministerial Meeting in October, in Jakarta.

4.5 TNC's Technology Learning Center

TNC's Technology Learning Center agreed to support CTC with the development of a virtual learning component that makes CTC's training modules accessible for networks of practitioners across the Coral Triangle (CT) by creating a web-page at www.conservationtraining.org (TNC's global learning portal) and create applications under the CTC web-site.

5. Public & Private Partnerships

5.1 Brawijaya University

Gede Raka Wiadnya, senior lecturer at the Brawijaya University and CTC board member is helping to facilitate a partnership between the University and CTC. A joint training on MPA spatial planning has been successfully completed for students from the University of Brawijaya. In addition, three students from Unbraw have completed a profile of fishermen in Nusa Penida.



Talks about close cooperation between UNBRAW and CTC

5.2 Partnership with TNC and CTI Alliance

CTC will work together to establish partnerships between Australian Universities and local Papua New Guinea and Solomon Islands training institutes, including the University of Papua New Guinea and University of South Pacific, to integrate a greater focus on marine resource management into teaching and curriculum. The project will involve the development of tailored and purpose-driven tropical marine resource management training courses, and the “training of trainers” in those courses within relevant local institutions.

5.3 Roundtable discussion US State Department Undersecretary for Democracy and Global Affairs



Rili Djohani participated in a round table discussion with the US State Department Undersecretary for Democracy and Global Affairs, Maria Otero, together with 12 other women leaders based in Bali representing foundations and businesses in health, social, economic, energy and environmental sector. Rili highlighted the public consultation process in Nusa Penida supported by USAID in which the women are widely engaged

and alternative income strategies such as seaweed cultivation involving women as an integrated strategy of the overall management plan. She also emphasized that conservation is a premise for sustainable development and food security. Building local capacity and public private partnerships are key components to address the major threats. Rili mentioned the USAID support to CTC to leverage and maximize sharing and learning among MPA practitioners in the Coral Triangle.